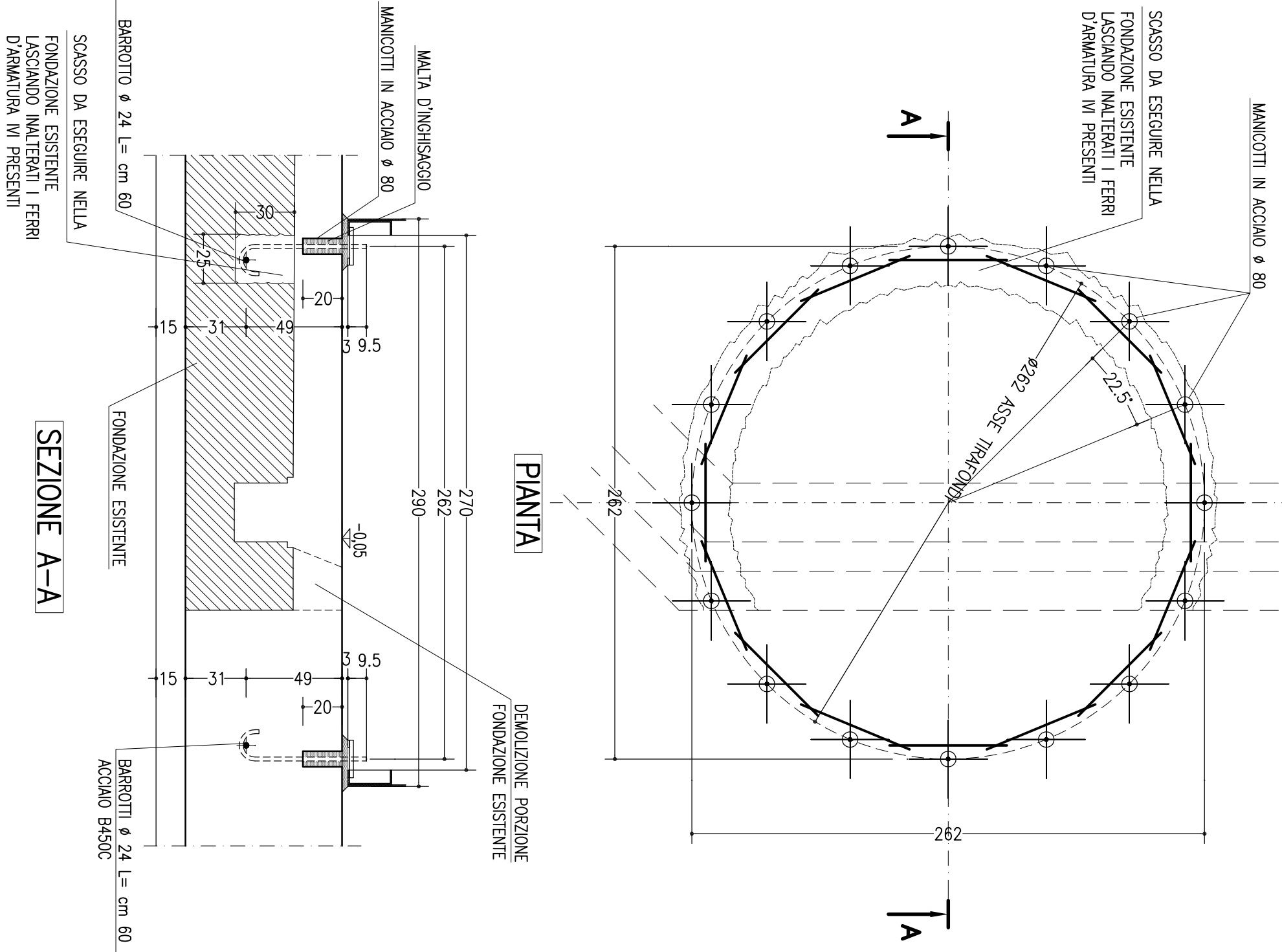
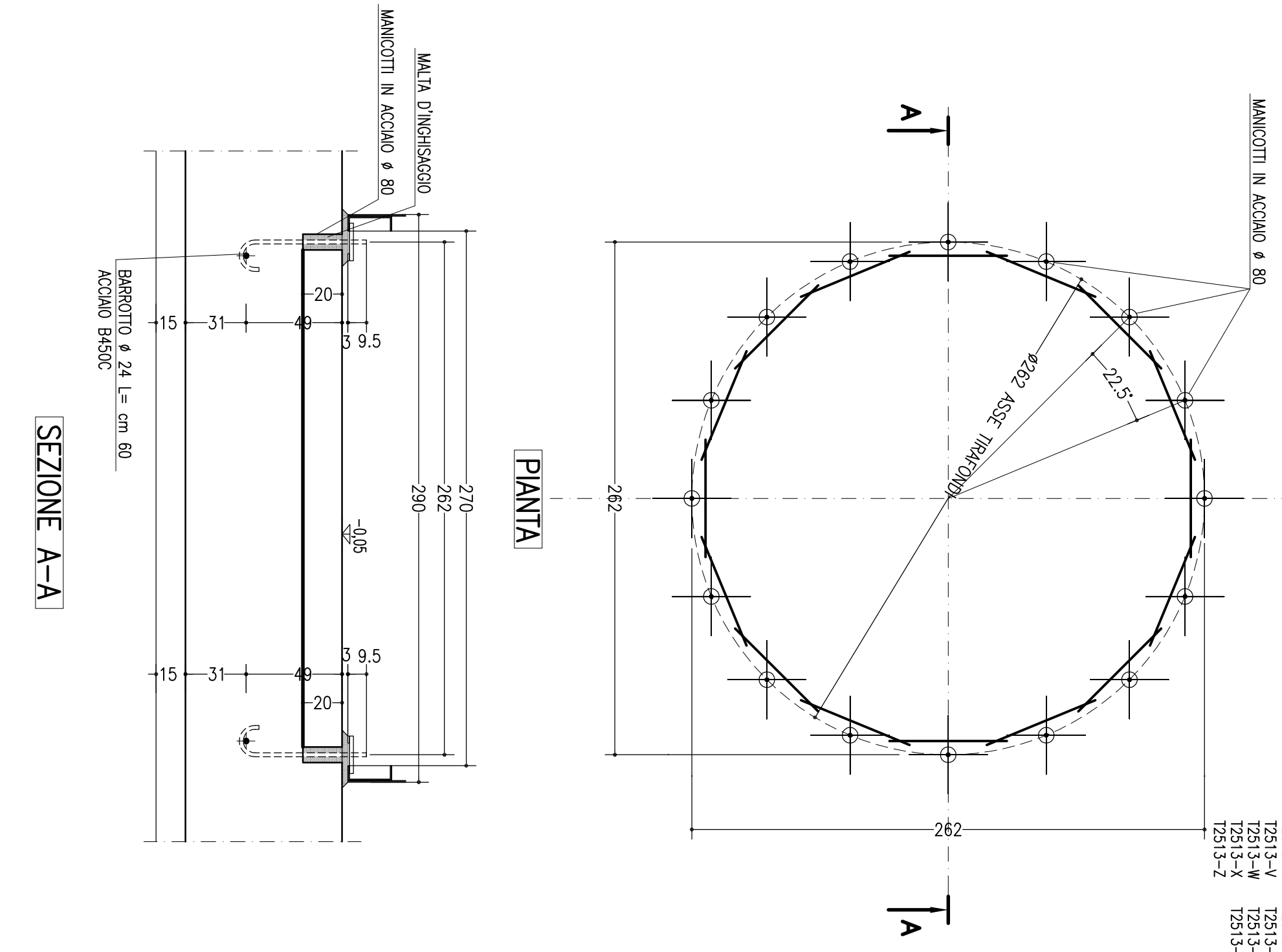


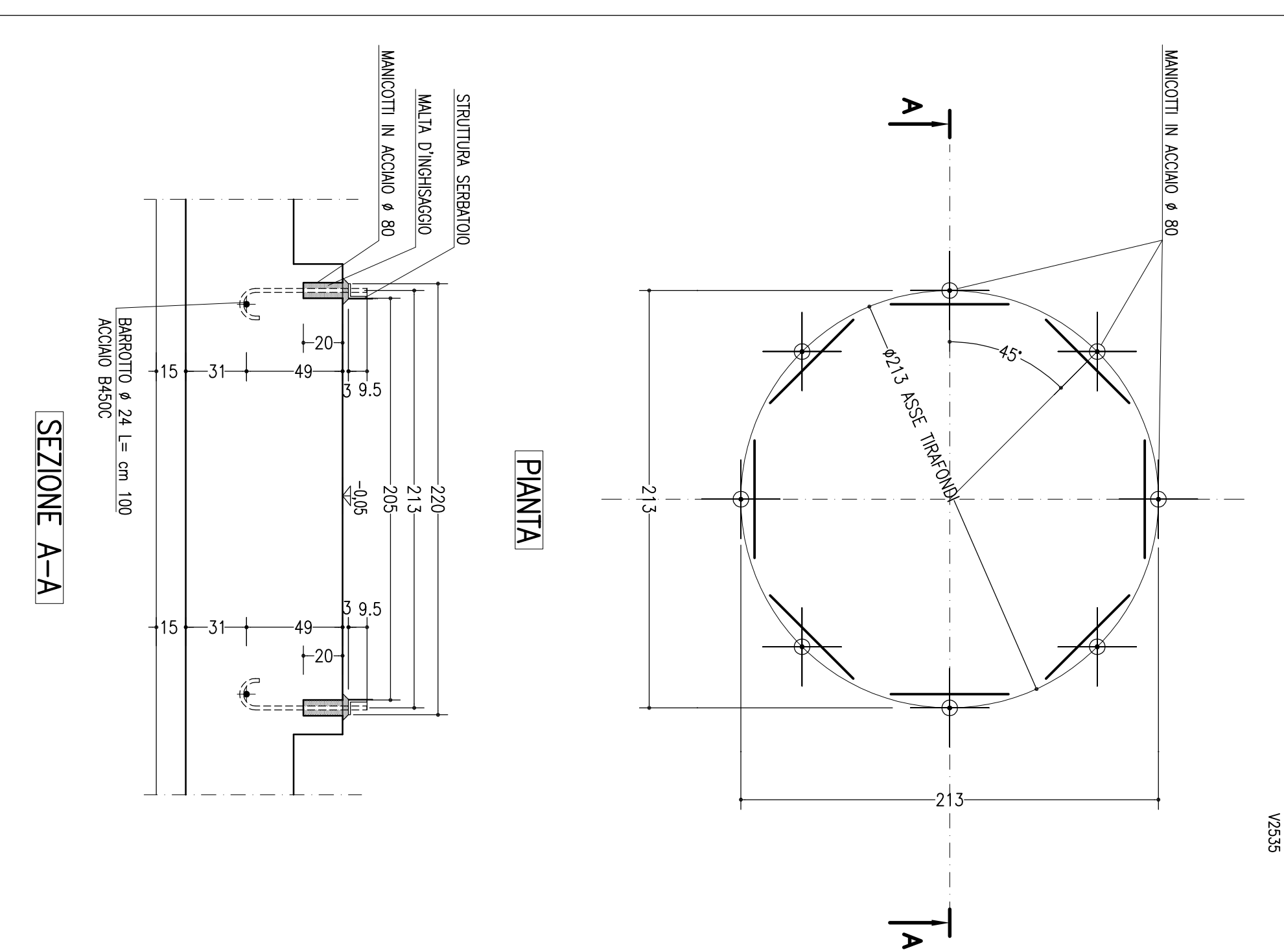
ANCORAGGIO TIPO "F1" (N° 1 VOLTA)



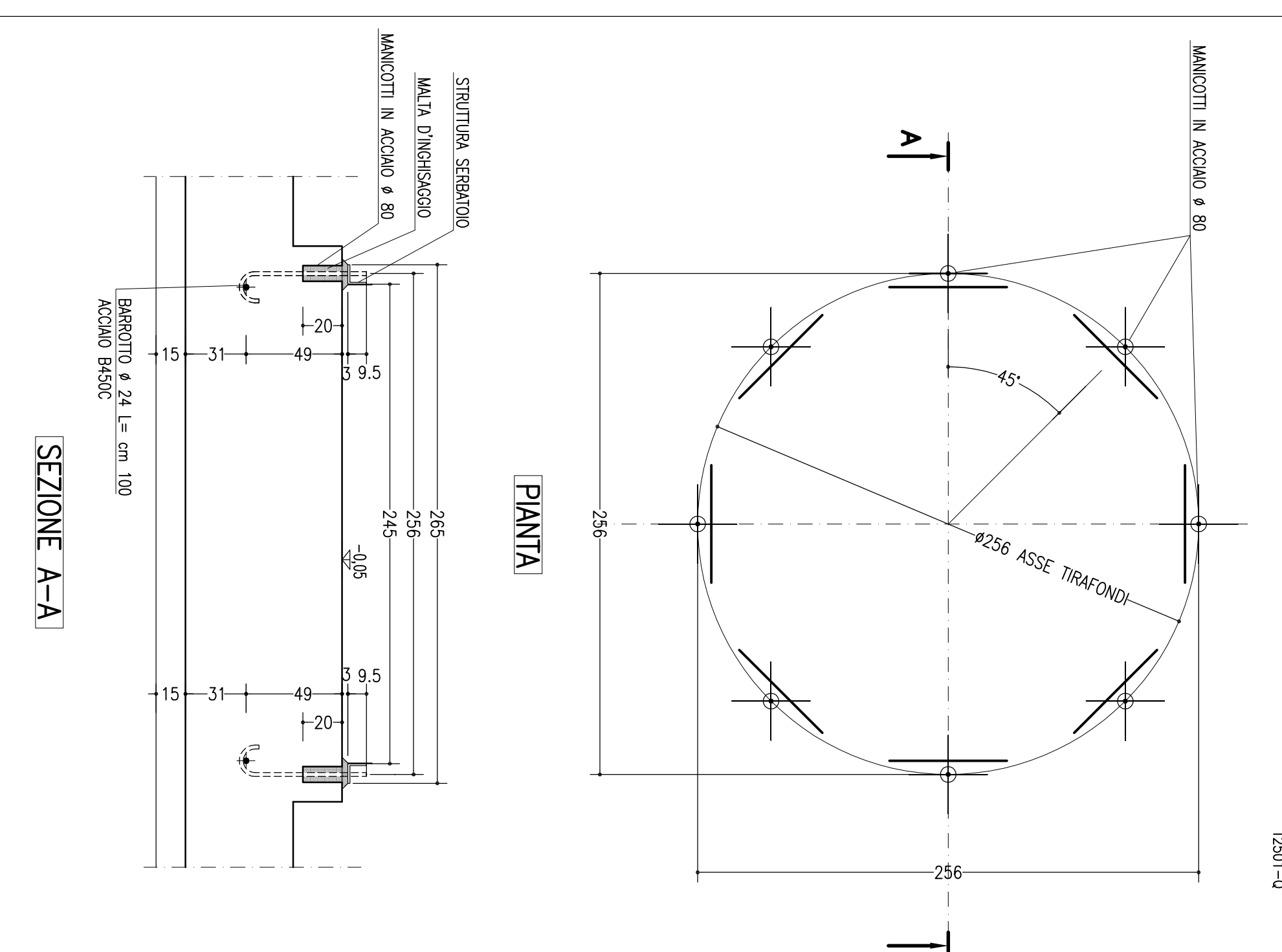
ANCORAGGIO TIPO "F" (N° 12 VOLTE)



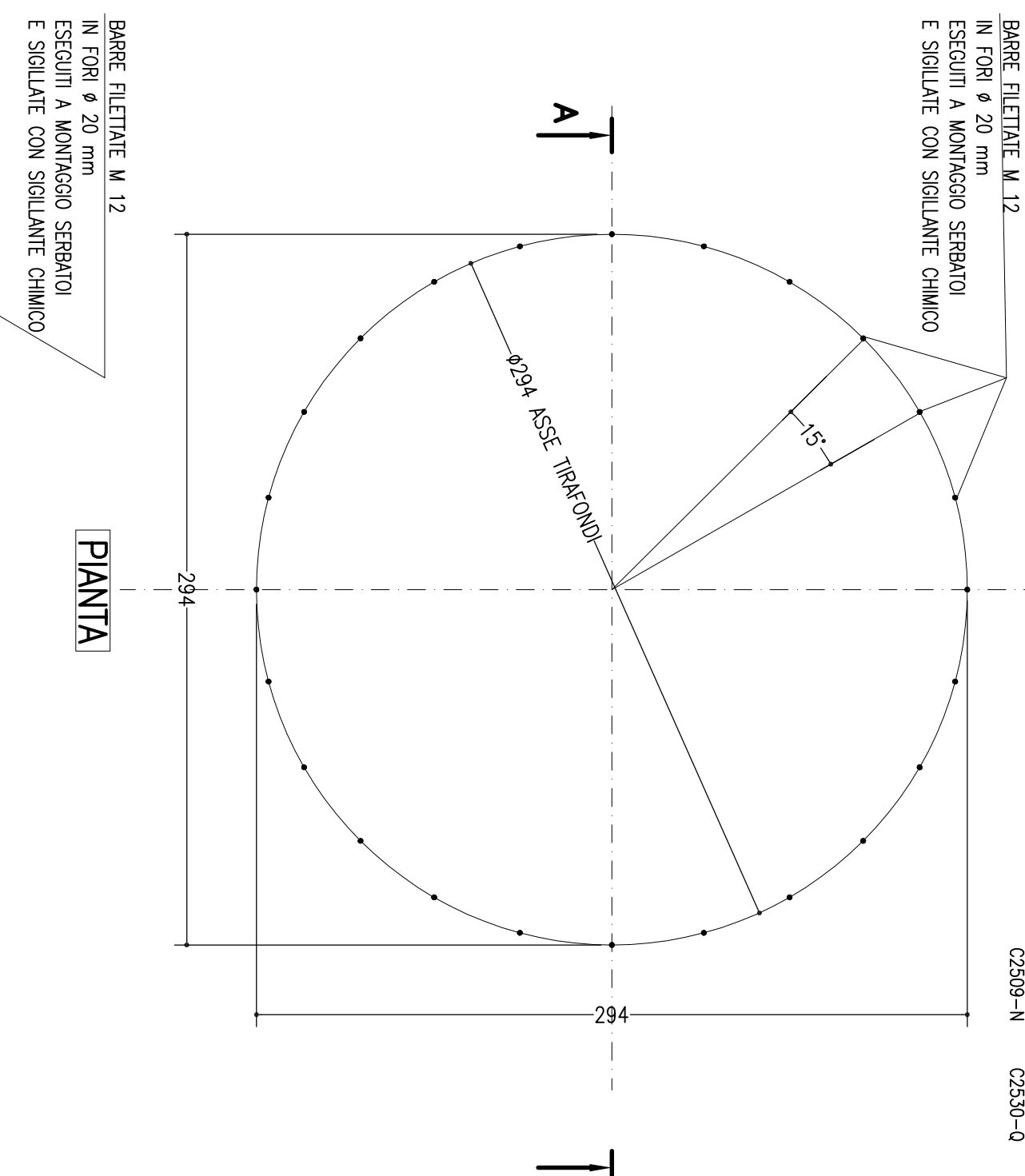
ANCORAGGIO TIPO "H" (N° 3 VOLTE)



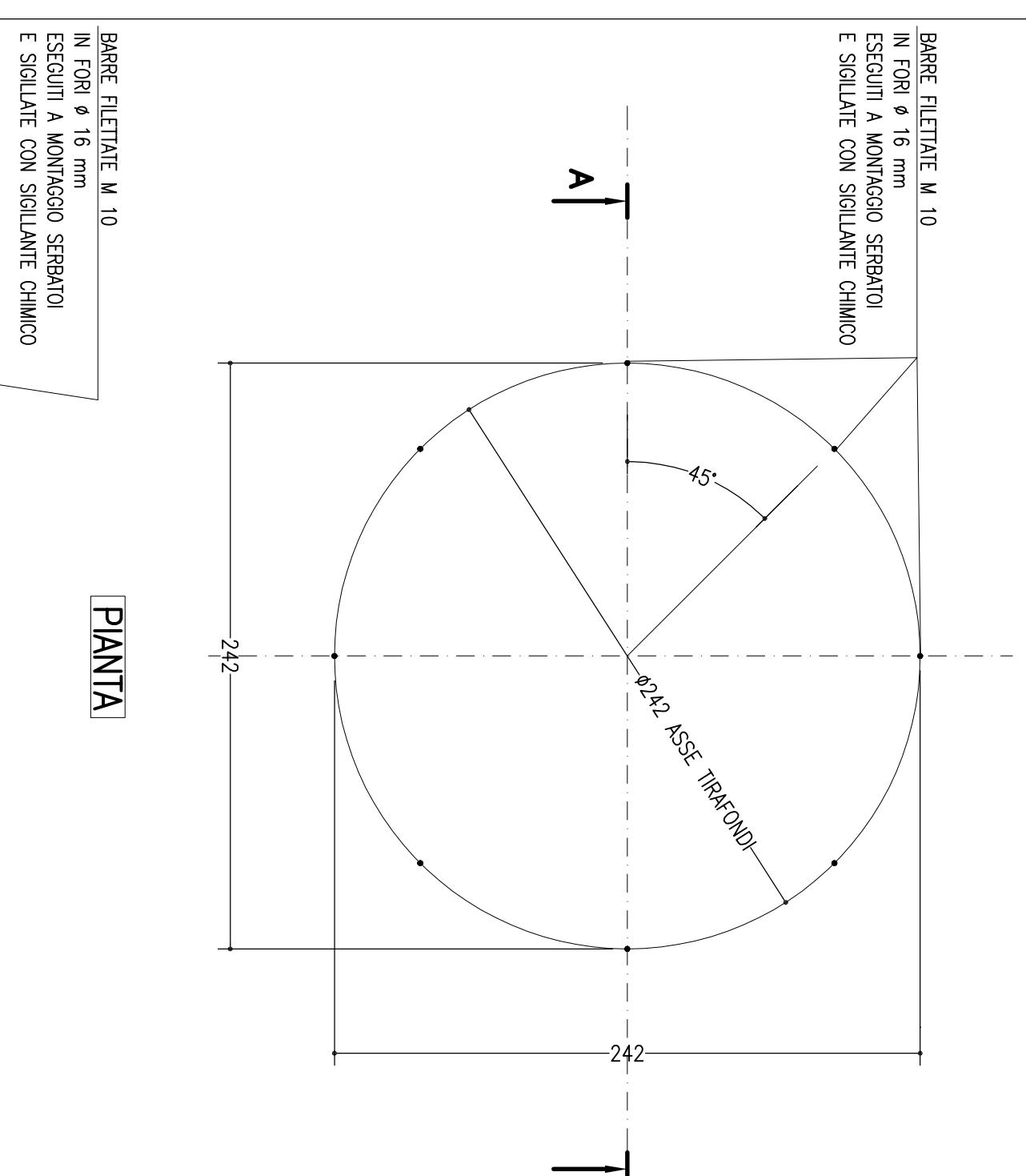
ANCORAGGIO TIPO "L" (N° 2 VOLTE)



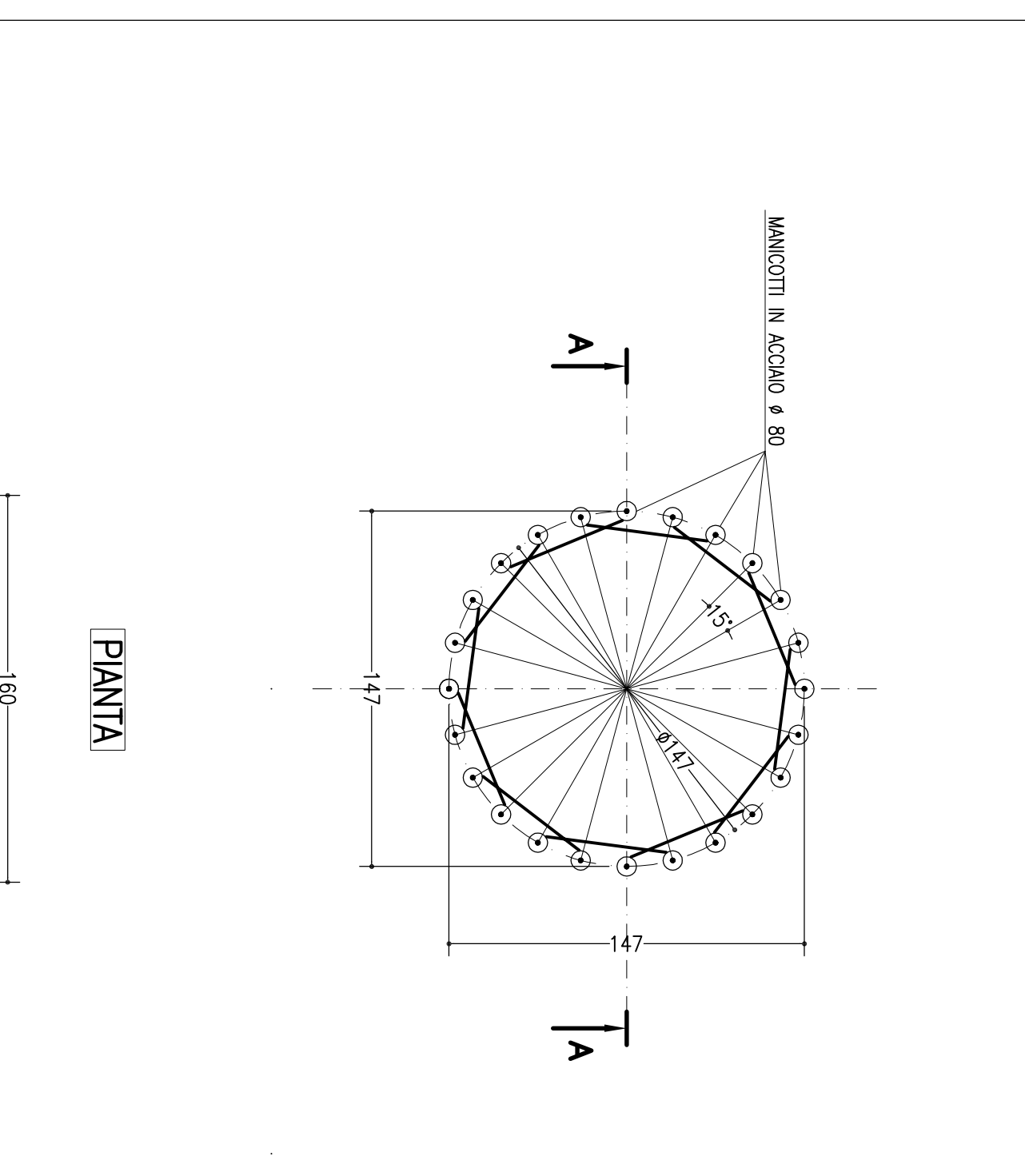
ANCORAGGIO TIPO "M" (N° 6 VOLTE)



ANCORAGGIO TIPO "N" (N° 2 VOLTE)



ANCORAGGIO TIPO "P" (N° 1 VOLTA)



CALCESTRUZZO: C 32/40 (R_{sk}40 MPa)
Classe di resistenza XC4 + XF1
Classe di consistenza S4
Diametro max aggregato 20 mm
ACCIAIO: B450C

STUDIO INGEGNERIA

"ENZO BERTINOTTI"

Il Progettista: Dott. Ing. ALBERTO PADUZZI

s.10